



White Paper:



Infrastructure + Analytics = InfraIytlcs
Essential Insights, Real-time



Join the discussions: [#infralytics](#) [#SmarterEverything](#)

So much info, so little time

Many IT organizations feel like they spend too much time reacting to problems and too little time proactively improving processes, upgrading equipment and addressing organizational needs. The problem isn't the lack of data, but rather the lack of insight. Who has time to pore over equipment logs, software contracts or helpdesk tickets? Are there cost-cutting opportunities that are being overlooked? Is your cloud solution providing the security you require? What applications or servers are being fully utilized and which are just the result of years of sprawl? You have the skills to address these kinds of questions but often lack the wherewithal to pull together the right data.

Data access is the only part of the equation, though. Even if you have the tools and time to analyze the data from across the enterprise, aggregating, cleaning and otherwise preparing data for executive review is a major time drain. Similarly, ensuring data quality is a tedious process, but one that is essential to making good, data-driven decisions. Flagship provides a solution that includes customized dashboards and management services with built-in capabilities for capturing quality data, flagging potential problems or cost savings and suggesting solutions that best suit your environment and business goals.



Smarter Everything with Flagship Infraalytics™

Infraalytics offers a new level of proactive intelligence to executive, management, line-of-business and administrator level users via customized dashboards.

- Provides access to real-time health of physical, virtual and cloud IT environment
- Optimizes IT infrastructure management reach
- Promotes understanding of big picture
- Facilitates future planning
- Enhances IT/Management communications
- Identifies memory and processor utilization levels
- Minimizes expenses by identification of overprovisioning, areas for consolidation and virtualization
- Avoids penalties with timely alerts to expiring software licenses, out-of-compliance issues
- Ensure cloud environment is secure and optimized
- Lower TCO

Infrastructure + Analytics = Infraalytics™

Flagship Solutions Group, with worldwide headquarters in Boca Raton, Florida, has announced an innovative new services capability, Infraalytics. It is designed to provide businesses with the ability to proactively understand internal IT infrastructure resource utilization, performance and capacity, in relation to the needs of the business, in a simple format, in real time. Infraalytics helps IT organizations better manage their specific operations by providing dashboard graphics that reflect what is currently happening on their servers, storage, networking endpoints, software, and the cloud. The dashboard graphics facilitate things like problem identification or cost savings opportunities anywhere in the system by displaying the entire IT environment in one place. This vendor-agnostic service can be integrated into any IT environment and is fully customizable to accommodate the customer's specific needs or goals.

Infraalytics History

Flagship Solutions Group has offered Infrastructure Solutions and Managed Services for a number of years. Infrastructure solutions include things like hardware, software, storage, networking or cloud offerings that provide the computing environment that supports the operation of the business. Flagship's Managed Services Offerings include cloud-based server monitoring and management, 24/7 help desk support, and data center infrastructure management through the Discovery Services Center (DSC), as well as strategic IT and architecture services, including assessments and analytics.

Flagship's experts routinely provide the empirical data that can identify a number of problems in their clients' IT infrastructures. In many cases, these issues are due to critical oversights caused by understaffed IT departments. Potential issues include:

- Low or high-level processor utilization
- Security weaknesses in the cloud
- Over-provisioned VM environment
- Inferior memory utilization of older server consolidations
- Critical patches installation in all systems
- Workload balance issues
- Lack of adherence to CPU, memory and disk utilization specifications
- Firmware that falls short of current industry levels
- Lack of consistent fault tolerant systems and requirements review
- Ineffective in-house monitoring and managing of networks
- Out-of-compliance software
- Software and product support ending





As a result of the identification of all or some of the preceding issues, Flagship's infrastructure experts create a roadmap of recommendations, specific to each business, to streamline and manage business processes and infrastructure.

Over time, it became apparent to Flagship that its clients needed more expedient information to avoid problems that threatened the well-being of their businesses. As a result, a team of Flagship infrastructure experts developed an offering that provides a variety of customizable displays, capable of summarizing a client's entire infrastructure (or select portions of that infrastructure) in real-time on one dashboard. This innovation combined Flagship's infrastructure analytics and managed service offerings to create InfraLytics™, which empowers IT organizations to respond quickly, intelligently and proactively to issues as they arise.

Flagship Solutions Group

**Your Smarter Partner,
Providing Smarter Everything,
Through Smarter Dashboards,
Simply.**



Smarter Dashboards –

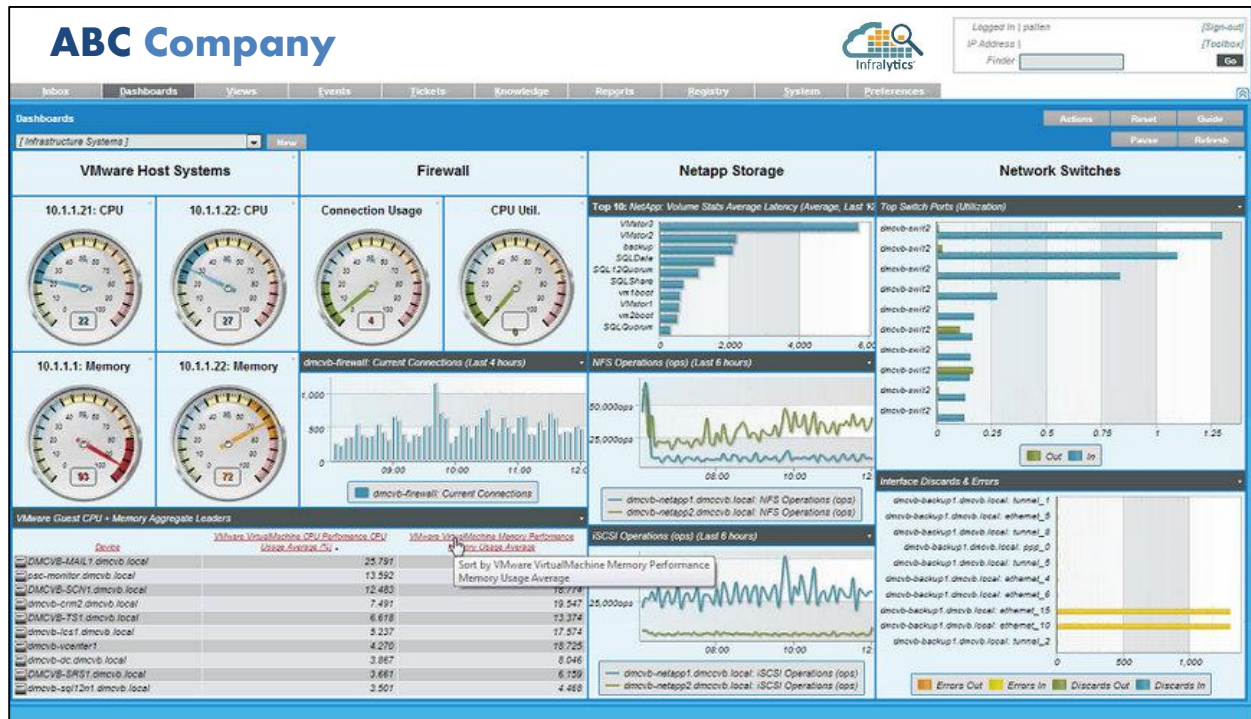


True Insight, Simply

Flagship's InfraLytics™ dashboards provide on-site access to interactive infrastructure analytics. The screen shot below is an example of what could be generated by system activity. Clients can now look at a graphical overview of their entire system and click to access the details, by company or site, while continuing to see physical servers and find specific Virtual Machines. By continuously capturing and consolidating the system's performance data, InfraLytics dashboards provide management with targeted and timely tools to understand and solve potential problems. For example, InfraLytics dashboard screens might include:

- Public, private and hybrid cloud environments
- Client VMware Host System CPU and memory performance
- Client VMware virtual machine CPU
- Memory and average disk performance usage
- VMware Data Storage
- Host ESX and Virtual Machines average availability
- Client Microsoft Critical Patches
- UNIX/Linux
- Mainframe
- iOS
- Network

Sample InfraLytics Dashboard



Join the discussions: [#infralytics](#) [#SmarterEverything](#)